

Infrastructure Deal & Valuation Analytics



infraMetrics®
by  QEDHEC infra & private

Q1 2023

Version 2.1.0



Infrastructure Deal & Valuation Analytics

About the product

The infraMetrics Deal and Valuation Analytics are divided between Comps and Asset Pricing metrics for both unlisted infrastructure equity and private infrastructure debt.

For **equity investments**, the tool provides over 20 financial and valuation metrics from price ratios to risk premia, discount rates, WACC and cashflow data derived from a universe of 800+ assets in 27 countries. Users can drill down into specific segments by geography and TICCS® pillars (Business Risk, Industrial Activity, and Corporate Structure). Comps and asset pricing metrics are also available by equity styles, such as Core, Core+, Green, Mid-Market or Opportunistic.

For **debt investments**, infraMetrics offers access to equally granular data for spreads, yields and duration, including for different debt maturities and currencies.

The right balance between robustness and granularity.

Key features

Robust data

Thanks to a large dataset of monthly evaluated data, each metric is built using hundreds of individual data points and dozens to hundreds of firms.

Granular data

infraMetrics gives access to several hundred segments defined by TICCS classes and subclasses, styles and geographies.

22-year history

infraMetrics includes many private infrastructure companies that have existed for several decades. The full dataset goes back to the year 2000.

Up-to-date data

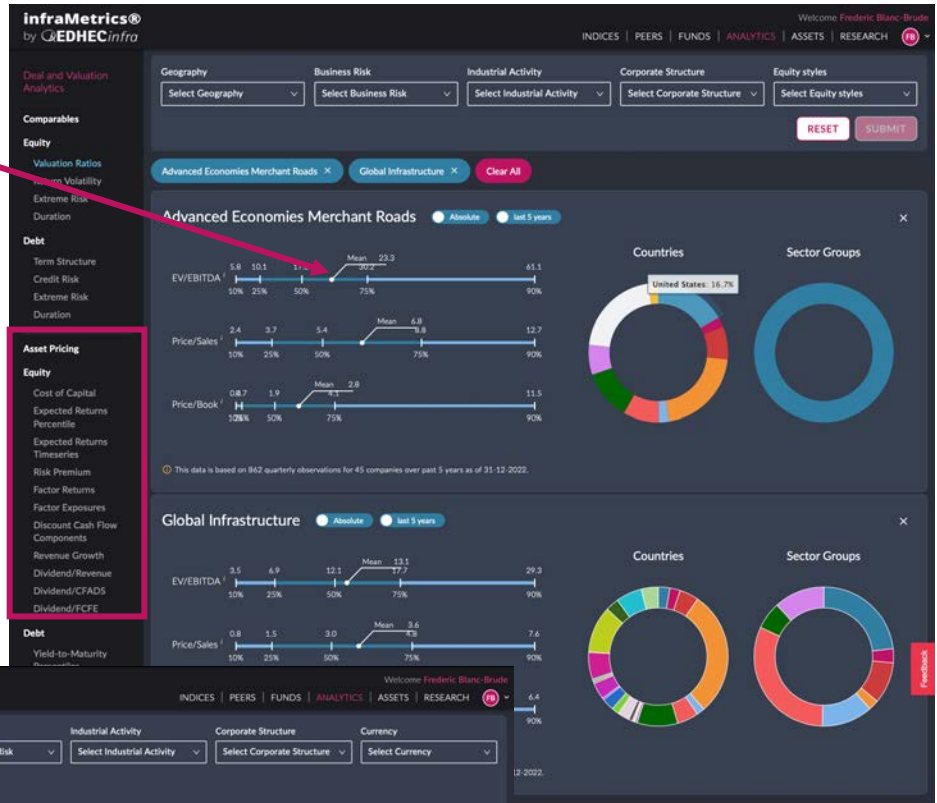
The data is updated quarterly with a ten-day lag, ensuring the availability of the data when it is needed for due diligence and reporting.

Infrastructure Deal & Valuation Analytics

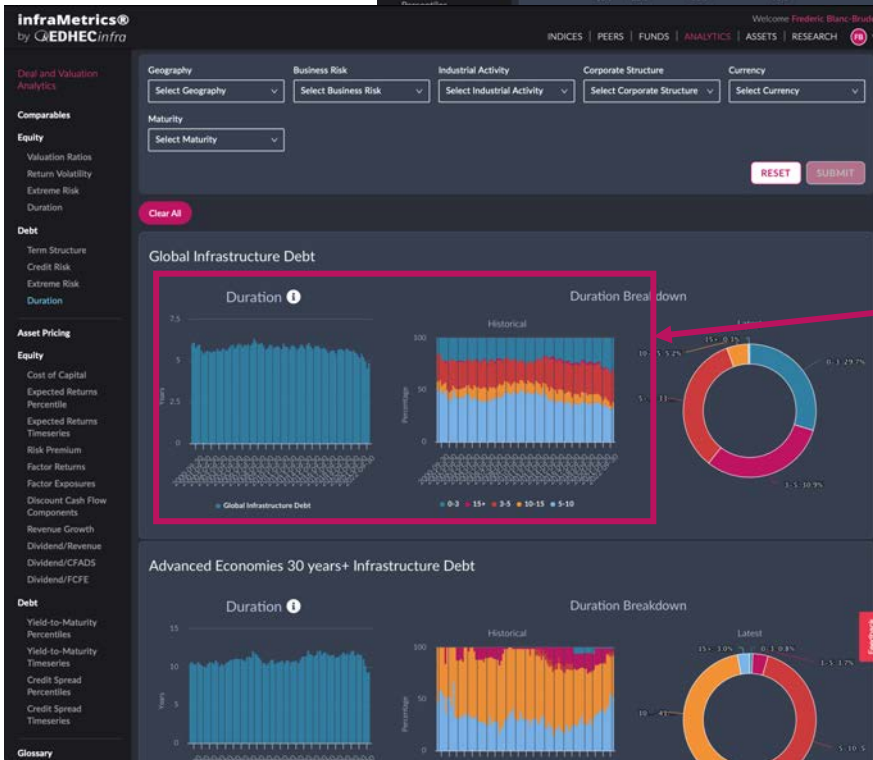
Key Features of the Analytics Module of infraMetrics®

Latest 5-year and 6-quarter quantiles of valuation metrics for hundreds of segments

More than twenty metrics to assess, compare and value private infrastructure equity and debt

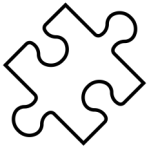


Time series going back 20 years for the EDHECinfra Universe of private infrastructure companies.



Infrastructure Deal & Valuation Analytics

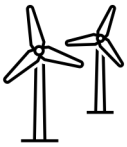
Key Use Cases



Asset Valuation

infraMetrics allows building granular yet robust comparables of EV/EBITDA or Price-to-Sales ratios, IRRs (yield-to-maturity) and cash flow growth forecasts to assess up-to-date ranges of valuation measures that control for segment and style exposures.

The consistent and reliable data provides users with the robust inputs to calibrate valuation models, validate key assumptions, and combine impartial quantitative deal and valuation analytics with their industry knowledge and expertise to arrive at the best decisions.



Transaction due diligence

infraMetrics Comps can inform at what price to bid given different assumptions in terms of cash flow growth, changes in the yield curve, pressure on market prices (yield compression) while meeting the target yield of the strategy/fund.



Risk Management and Reporting

The deal and valuation analytics can be used to report monthly risk numbers including VaR and drawdown, and to calibrate Solvency-like internal models for both unlisted infrastructure equity VaR and private infrastructure debt spread shocks.



Market Intelligence

The breadth and granularity of the data updated on a quarterly basis is a rich source of information to help update and inform investors on changing market dynamics, including updating capital market assumptions.

Indicators are updated every month to capture current market condition, e.g. changes in equity risk premia and credit spreads as market expectations evolve. This enables investors to adapt to changing dynamic and report to clients and regulators using the most up-to-date data available.

Infrastructure Deal & Valuation Analytics

Key Features of the Analytics Module of infraMetrics

The screenshot displays the 'Global Infrastructure' analytics page. At the top, there are filters for Geography, Business Risk, Industrial Activity, Corporate Structure, and Equity styles. A 'Summary of dividend over revenue ratio' table is shown below the filters.

Age	Mean	Q1	Median	Q3	Std Dev
0-10 years	17.2%	0.0%	5.3%	25.1%	27.1%
10-20 years	22.4%	0.0%	13.8%	31.2%	27.8%
>20 years	20.8%	0.4%	13.4%	29.2%	25.8%

Below the table are three charts: 'Dividend over revenue ratio by age' (line chart), 'Distribution of dividend over revenue ratio by age' (bar chart), and 'Histogram of dividend over revenue ratio' (histogram). A pink arrow points from the text 'Distributions of cash flows' to the line chart.

Another pink arrow points from the text 'Cash flow growth patterns by age and calendar time' to the histogram.

The interface also shows a 'Feedback' button and a 'RESET' button. A second screenshot on the right shows a similar view for 'Advanced Economies Network Utilities Corporates'.

At the bottom, a table shows the 'Average change in NAV in the Advanced Economies Network Utilities Corporates segment' decomposed by time period and driver.

Change in NAV	Due to change in dividend forecast	Due to change in interest rates	Due to change in equity risk premia
Last 1-yr avg	9.5%	-17.7%	7.5%
Last 3-yr avg	4.3%	-19.6%	-5.2%
Last 5-yr avg	6.8%	-14.0%	-6.0%

A pink arrow points from the text 'NAV change decompositions by change in rates, risk premia and future cash flows' to this table.

Below this is another table for 'Global Infrastructure' showing similar NAV change decompositions.

Change in NAV	Due to change in dividend forecast	Due to change in interest rates	Due to change in equity risk premia
Last 1-yr avg	2.5%	-14.7%	4.3%
Last 3-yr avg	11.0%	-16.1%	-4.0%
Last 5-yr avg	9.1%	-10.5%	-5.2%

Infrastructure Deal & Valuation Analytics

Deal and valuation data available in infraMetrics

Unlisted Infrastructure Equity

Equity Segments Available		
By Geography	By TICCS® Pillar	By Style
Regions and countries	Business model Industrial Activity Corporate Structure	Mid-Market Core, Core+, Opportunistic Green

Equity Metrics Available		
Comps	Asset Pricing	
EV/EBITDA	Cost of capital	Revenue growth
Price-to-Sales	Expected returns percentile	Dividend/Revenue
Price-to-Book	Expected returns time series	Dividend/CFADS
Return volatility	Risk premiums	Dividend/FCFE
Value-at-Risk	Factor returns	DCF components
Max Drawdown	Factor exposures	
Duration		

Private Infrastructure Debt

Equity Segments Available		
By Geography	By TICCS® Pillar	By Style
Regions and countries	Business model Industrial Activity Corporate Structure	Issuance Currency Issuance Maturity

Debt Metrics Available	
Comps	Asset Pricing
Term Structure	Yield-to-maturity percentiles
Credit Risk	Yield-to-maturity time series
Extreme Risk	Credit spread percentile
Duration	Credit spread time series

Infrastructure Deal & Valuation Analytics

About Us

Scientific Infra and Private Assets Pte Ltd is a venture of the EDHEC Business School and its Infrastructure Research Institute (EDHECinfra). The company is an index data, benchmarks, analytics, and research provider for investors in the unlisted infrastructure and private equity universe. The infraMetrics platform rests on the largest and most representative database of unlisted infrastructure equity and private infrastructure debt investments in the world.

Scientific Infra and Private Assets Pte Ltd is a regulated index provider recognised by ESMA and maintains infraMetrics: a data platform that includes market indices, investor peer group benchmarks, infrastructure fund benchmarks, deals and due diligence analytics, asset-level valuation, credit risk and climate risk data, as well as research papers and datasets.

Contact Us



+44 (0) 207 062 5328



sales@scientificinfra.com

Disclaimer

The infraMetrics indices calculated by Scientific Infra & Private Assets Pte Ltd are for research purposes and in no case constitute an investment recommendation or allocation. As a result, neither Scientific Infra, EDHECinfra or EDHEC are responsible for the material or moral consequences of their use, which are the sole responsibility of the user. Publication of the index composition data and the financial characteristics that could be associated with these components does not constitute promotion or a solicitation to invest in these components but provides useful additional information for the proper study and use of the indices. Neither Scientific Infra and Private Assets Pte Ltd, EDHECinfra or EDHEC are responsible for the material or moral consequences of errors or omissions that may affect the calculation of the infrastructure indices that they publish or the calculations that are carried out using these indices. The EDHECinfra trademark is the exclusive property of EDHEC.

